

**Fig. 13 – Model SP13.5TRBXWK**

Unequivocally, undeniably, doubtlessly, without question and really this is the most amazing, remarkable, revolutionary, sensational new development ever revealed, ever, honest! When you see this new terrific unit you won't be able to contain yourself! WOW! Silky highs-woolen lows! Complete with new vital "presence" and "absence" controls! Your friends will scream with envy when they hear this new speaker! Amazing new exclusive 3-way, 12-D, binaural relief port eliminates spurious propagation of intermediate, and undesirable biped, tertiary grid-leaks! No messy floors to mop! WOW! This new reproducer incorporates a new, ridiculously simple principle which our engineers can't explain yet! 13 extra octaves of added bass when the unit is coupled to a bowl of oatmeal. Think of that—just think of that! WOW! Complete, self-contained including new "wow" filter; nothing else to buy! (See page 2 for accessories.) Comes with new 5" cable and new genuine combination "Good-luck" charm and stylus pressure gauge!

**FEATURES**

**IT'S HEAR!**  
**NEW! THE SPEAKER THEY SAID "COULDN'T BE MADE"**  
**You won't believe this! WOW!**  
**Top Extra Highest Fidelity!**  
**Unprecedented! Superb! Unexcelled! Amazing!**  
**Unnerving! Undirectional!**  
**Unnatural! Customized! WOW!**

**SPECIFICATIONS**

Frequency Response: DC to middle of Channel 5 ± 3 inches (See Fig. 39.)  
 NRA Sensitivity Rating: 98.6°  
 Free-Space Cone Resonance: Huh?  
 Power Handling Capacity: 110-220V 25 cycle AC-DC 3 phase  
 Critical Damping Factor:  
     In an infinite Baffle: .001  
     In recommended orange crate: WOW!  
 Distortion: Don't mention that word  
 Magnet Weight: 3 tons  
 Size: 5'4" wide x 17' narrow x 13 1/16" high x \$7 short  
 Mounting: 13 miscellaneous size holes randomly spaced at uneven intervals in a haphazard way  
 Net Weight: 73 tons  
 Shipping Weight: 68 tons  
 Price: \$7,907\* Audiopill Net, F.O.B. your nearest tar pit. Comes completely un-assembled in three box cars

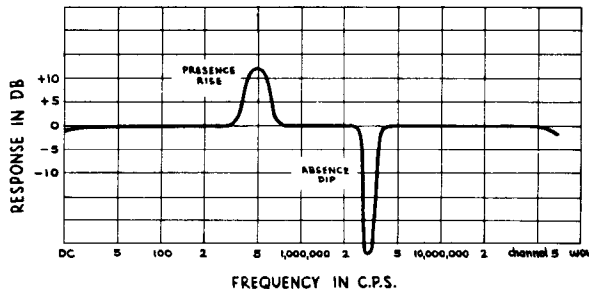
Mr. Fafnir N., Horse Cave, Ky.  
 "Send me another—my canaries love it—it's for the birds!"

Miss Brunhilde S., Horse Cave, Ky.  
 "This thing scares me!"

Mr. Clyde T., Horse Cave, Ky.  
 "I'd send it back, but the postmaster won't touch it."

Mr. Wong Wong Ago, Horse Cave, Ky.  
 "这个喇叭真厉害!"

**Fig. 5 – Actual Testimonials from Satisfactory Customers**



**Fig. 3 – Frequency Response at 791-watt Level**

\*Zone 2 includes: West Texas

ENGINEERING DATA

SP13.5TRBXWK Rearaxial Softspeaker

**INSTALLATION**

If you are left handed, start with step "f" and reverse procedure.

- a. Connect the 300-ohm twin-lead from the UHF Antenna to the terminals marked VHF ANT on the rear of the chassis.
- b. Connect a short length of 300-ohm twin-lead between the terminals marked UHF REC on the rear of the front chassis and the UHF antenna terminals marked AFC on the front of the rear chassis.
- c. Connect the 300-ohm lead from the UHF antenna to the terminals marked WOW ANT on the side of the front chassis.
- d. Connect a short length of 300-ohm twin-lead between the terminals marked VHF REC on the front of the side chassis.
- e. Connect a short length of 300-ohm twin-lead between the terminals marked TVREC on the side of the rear chassis and the UHF antenna terminals marked REC ANT on the receiver chassis.
- f. Connect the VHF antenna to the terminals marked FM ANT on the rear of the rear chassis.

NOTE: If a short length of 300-ohm twin-lead is not available, use two short lengths of 150-ohm twin-lead, or cut a long length of 600-ohm twin-lead in half. If more than one UHF station is to be received, the automatic on-off switch may still be used as outlined above under Automatic "Operation." If this feature is not desired the frontpanel on-off switch may be used and the AC receptacle on the rear chassis disregarded; in this case, disconnect a short length of 300-ohm twin-lead.

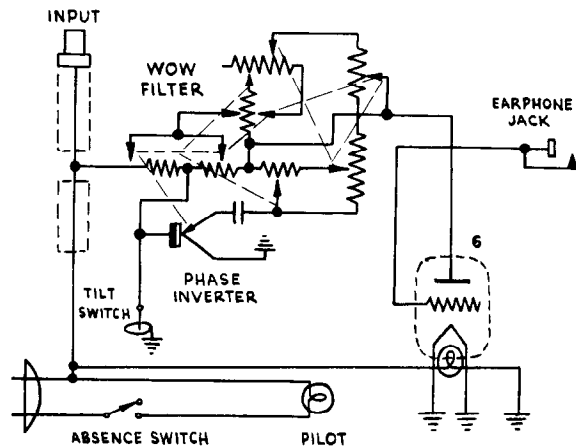
When connecting interconnected connectors, take care to connect the connected connecting connectors to the unconnected connections, interconnecting the disconnected connectors with a short length of 300-ohm twin-lead. Otherwise constumpulation of the transmognifactor will cause interpolation of the controcacoustic control. WOW!

**CAUTION NOTES**

1. Do not operate this speaker within 200 feet of Aardvarks and 3-toed Sloths as this thing will cause untold agony and immediate disintegration to the aforementioned above.
  2. It is imperative that all inputs and outputs are grounded so that output is reduced to the doorstep of pain when used indoors.
  3. Close cover before striking.
- N.B. Unless instructions are carefully followed with utmost caution and circumspection, shock waves and turbulantbuffeting may be experienced and the darn thing won't work.

**ACCESSORIES**

Model BRAK-1. 75-ton derrick. Dainty and inconspicuous for quick, easy mobility when moving unit for dusting, relocating, mobile operation. Audiopill Net (with steam engine)..... \$7,907  
 Model BRAAK-1. Furnishing kit. For interior of packing crate. Use this handy little accessory to convert the SP13.5TRBXWK packing crate to an additional room for your home. Comes in Battered Blonde, Weather-beaten Mahogany, and Box Car Red. Audiopill Net..... \$790.70  
 Model BRAAAK-1. Birdcall adapter. Special sonic generator either attracts or repels birds of all types. Complete with 1,239 position bird selector switch and 7x50 coated binoculars for watching birds come and go. Please specify birds desired. Audiopill Net..... \$79.07



Schematic Diaphram

ELECTRIC-VOICE, LTD. / Largest makers of ear trumpets and stuff in the country.  
 Electro-Voice, Ltd., 7 North Southwestern Ave., East Westerly, South Dakota  
 Plants located in Horse Cave, Ky., and Kinnikinnick, Connecticut  
 Shopping for Real Estate in Horse Cave, Calif.  
 Cable Address: Madglockenschpielermitgongennoisenlab

Part No. A7907  
 Stock No. 7907  
 Form No. HB-6  
 Bulletin No. 21  
 Run No. 12218L  
 Phone No. 1000